



## Contacts

- Assistant Director Jason Hearon [jason.hearon@dep.nj.gov](mailto:jason.hearon@dep.nj.gov)
- Central region Superintendent is Peter Winkler [peter.winkler@dep.nj.gov](mailto:peter.winkler@dep.nj.gov)
- Also Central, Melissa Woerner [Melissa.Woerner@dep.nj.gov](mailto:Melissa.Woerner@dep.nj.gov), *Senior Biologist/Regional Habitat Planner*, New Jersey DEP Fish and Wildlife Bureau of Land Management, Assunpink WMA/CRO, 1 Eldridge Road, Upper Freehold Twp, NJ 08691, Office: 609-223-6075, Cell: 609-789-2052
- Southern region is Nathan Figley [nathan.figley@dep.nj.gov](mailto:nathan.figley@dep.nj.gov)

## **North (131 Acres)**

Clinton Wildlife Area (41 Acres)

**Route 173W Clinton, NJ 08809 785-887-6882**

**Union Township**

**Black River WMA (49 Acres)**

Route 513 (Dover-Chester Road) Chester, NJ 07930

Morris County

Whittingham WMA (40.6 Acres)

150 Fredon Springdale Rd, Newton, NJ 07860 [\(973\) 383-0918](tel:(973)383-0918)

[Sussex County](#)

## **Central (87 Acres)**

Manasquan River Wildlife Management Area (63 Acres)

Allenwood, NJ 08720

Nonte: Approximately 90 acres of fields in [Manasquan Wildlife Management Area](#) were planted with a variety of wildlife food plot seed mixes in May 2020. These fields are being used to test various seed mixes that will benefit wildlife species, such as deer, turkey, and pollinators.

Ocean and Monmouth Counties

[Medford Wildlife Management Area \(24 Acres\)](#)

**Ark Road, Medford, NJ** Phone: (609) 259-2132

Burlington

## **South (178 Acres)**

[Abbotts Meadow Wildlife Management Area](#)

198 Money Island Rd, Salem, NJ 08079

Salem County

Mantua Creek (13.8 Acres)  
Gloucester County - East Greenwich & West Deptford Townships

Salem River Wildlife Management Area (19.5 Acres)  
Route 45, Salem, NJ 08079  
Salem County

Thundergut Pond (59.5 Acres)  
Salem County - Alloway Township. 2511 Acres

Union Lake (40.0 Acres) County Rd 552, Millville, NJ 08332  
Carmel Road, CR 608, Millville, NJ Phone: (609) 984-0547

Directions: Turn Left out of Peek Preserve onto Route 47 North. After 1.5 miles, turn Left onto Route 49/Main St. at the gas station. Continue on Route 49 for 1.3 miles, and then turn Right onto CR 608, Carmel Rd. Follow for 0.7 miles and turn Right at the sign for the Union Lake Wildlife Management Area.  
Cumberland County

Gumtree Corner (24 Acres)  
Cumberland County - Stow Creek Township.

Fortescue (21.6 Acres)  
Newport, NJ 08345 [\(856\) 447-3100](tel:8564473100)  
Cumberland County

# Whittingham WMA

Organic Farm Lease Proposal

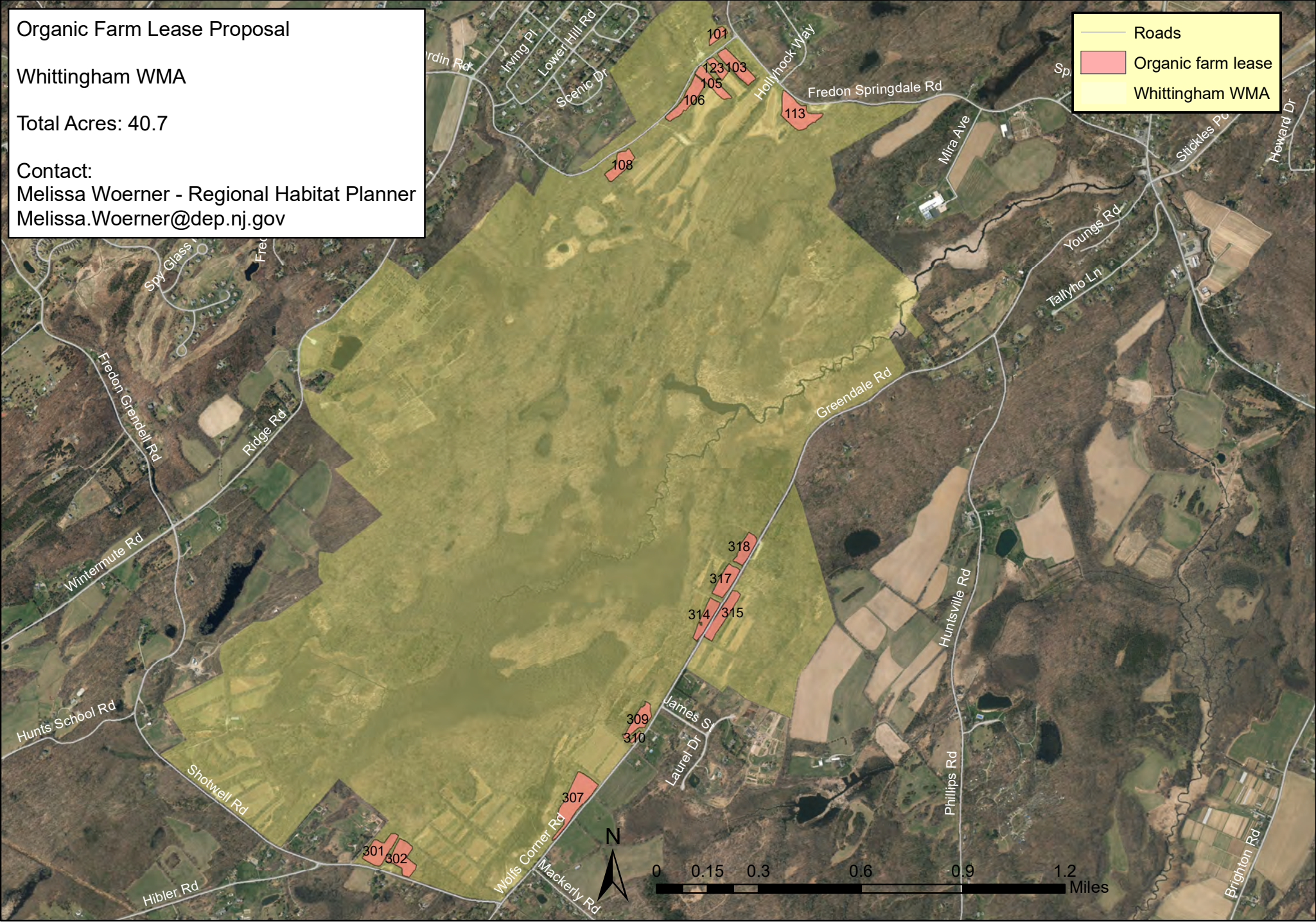
Whittingham WMA

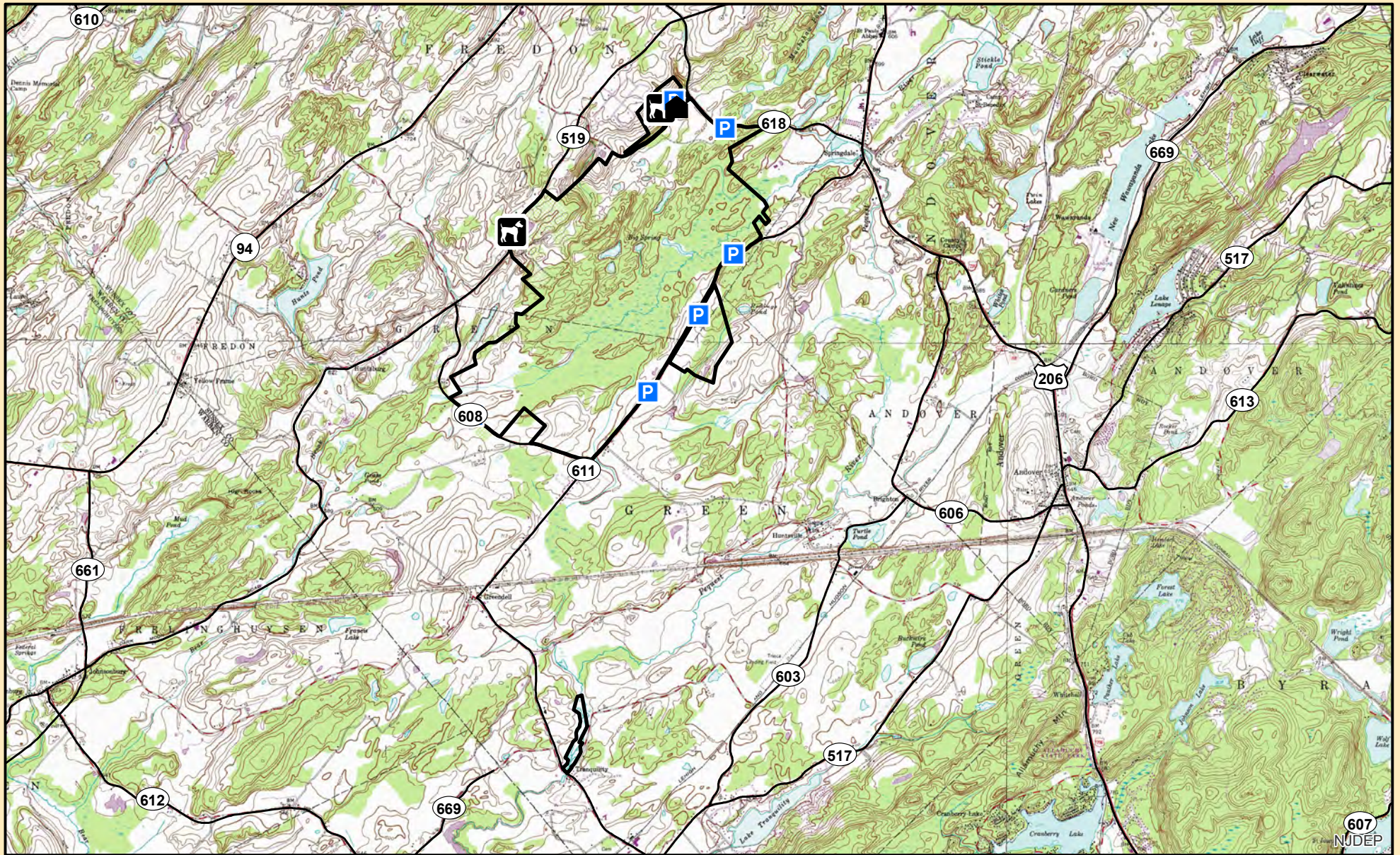
Total Acres: 40.7





Contact:  
Melissa Woerner - Regional Habitat Planner  
Melissa.Woerner@dep.nj.gov



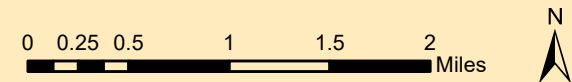
- Roads
- Organic farm lease
- Whittingham WMA





-  WMA Boundary
-  Office
-  Dog Training
-  Parking

**Whittingham Wildlife Management Area**  
 Sussex County, Green & Fredon Townships  
 1,951 Acres



NJ Department of  
 Environmental Protection  
 NJ Division of Fish & Wildlife



# Black River WMA

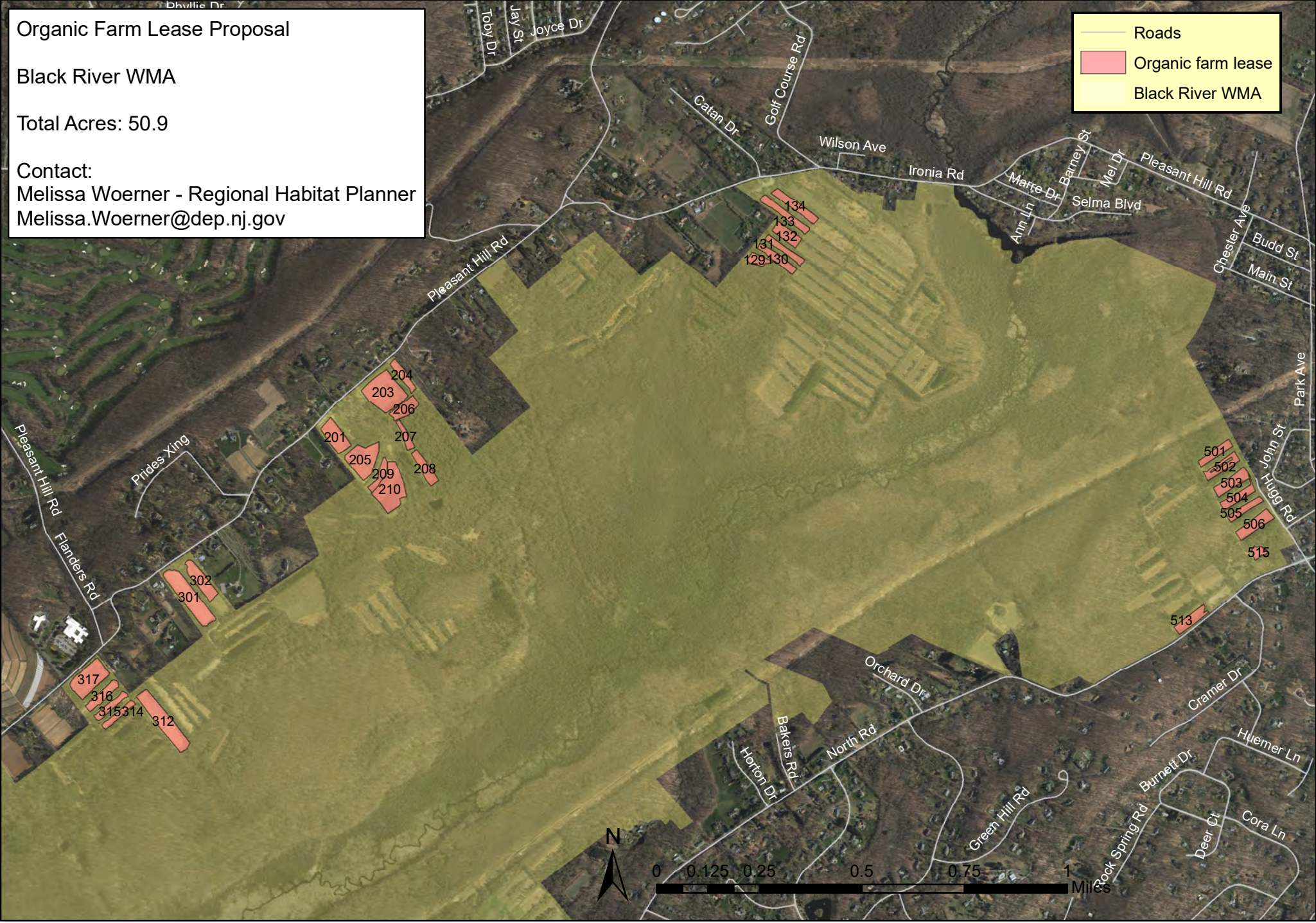
Organic Farm Lease Proposal

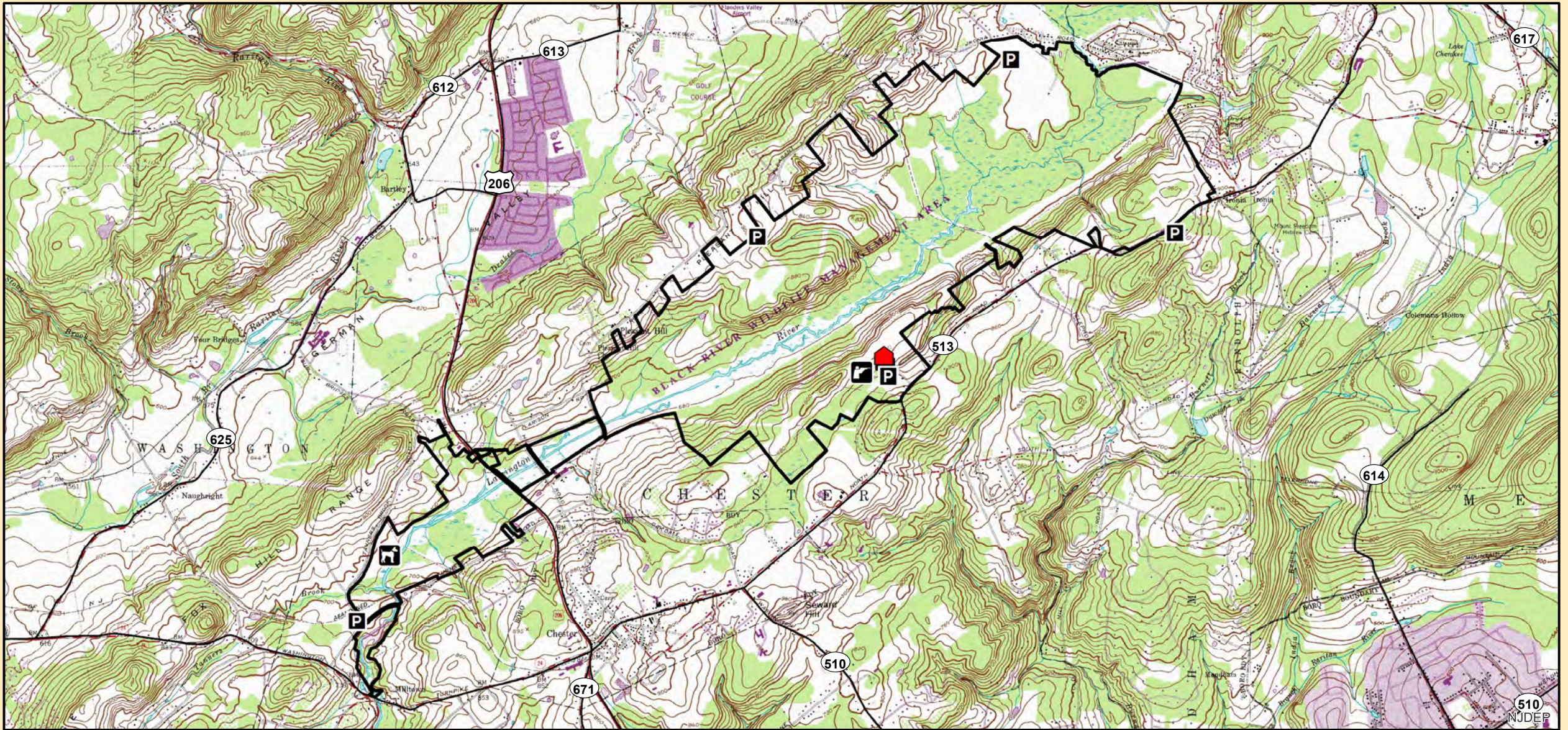
Black River WMA





Total Acres: 50.9

Contact:  
Melissa Woerner - Regional Habitat Planner  
Melissa.Woerner@dep.nj.gov

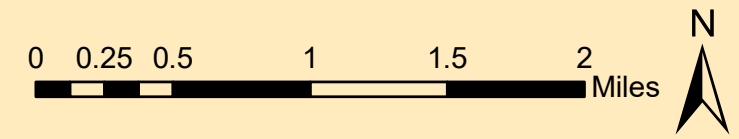
- Roads
- Organic farm lease
- Black River WMA





-  WMA Boundary
-  Office
-  Dog Training Area
-  Parking
-  Garage
-  Range (Archery & Shotgun)

**Black River Wildlife Management Area**  
 Morris County - Chester Township  
 3,078 Acres



NJ Department of  
 Environmental Protection  
 NJ Division of Fish & Wildlife



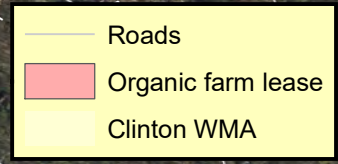
# Clinton WMA

Organic Farm Lease Proposal

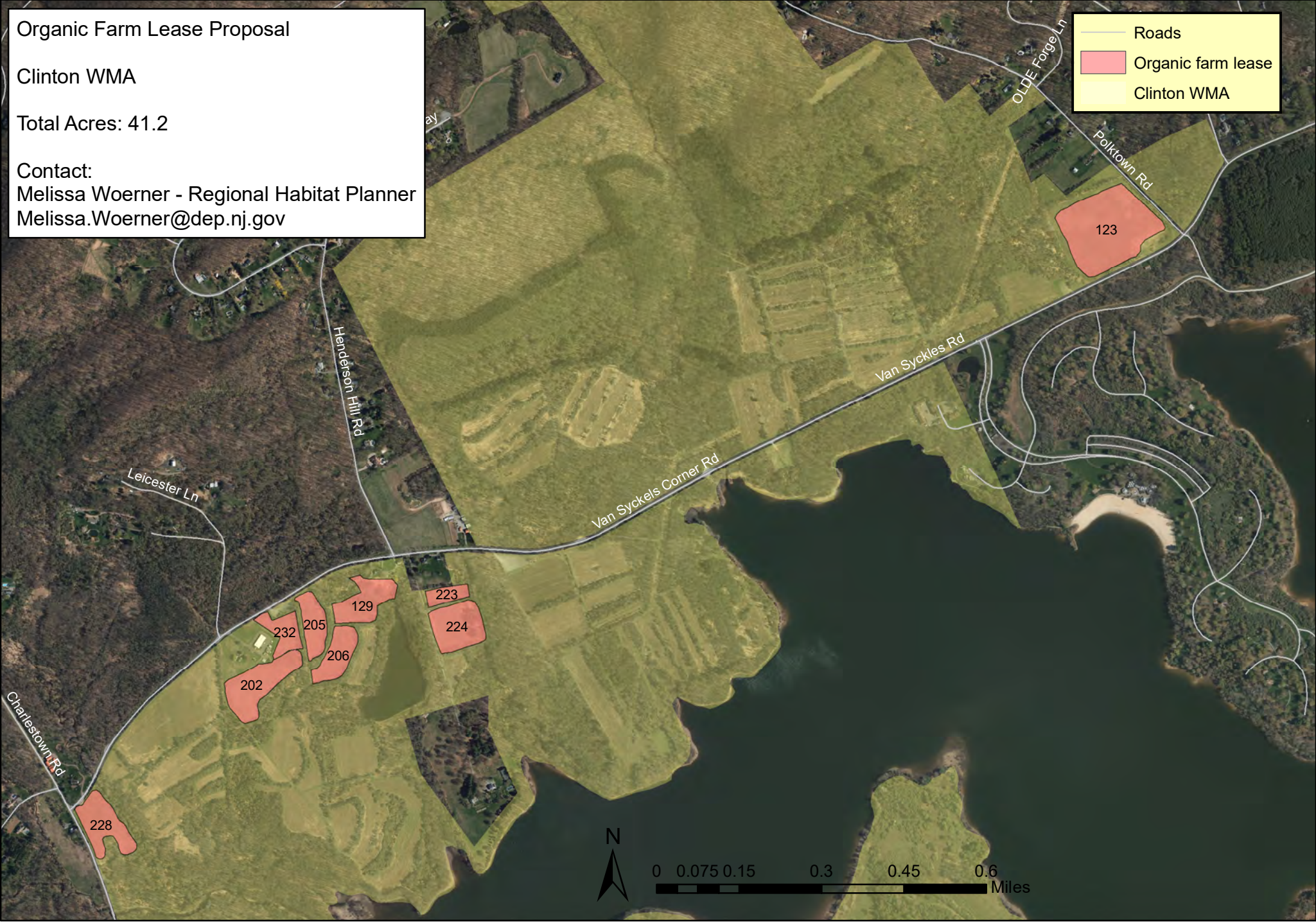
Clinton WMA

Total Acres: 41.2

Contact:  
Melissa Woerner - Regional Habitat Planner  
Melissa.Woerner@dep.nj.gov



- Roads
- Organic farm lease
- Clinton WMA



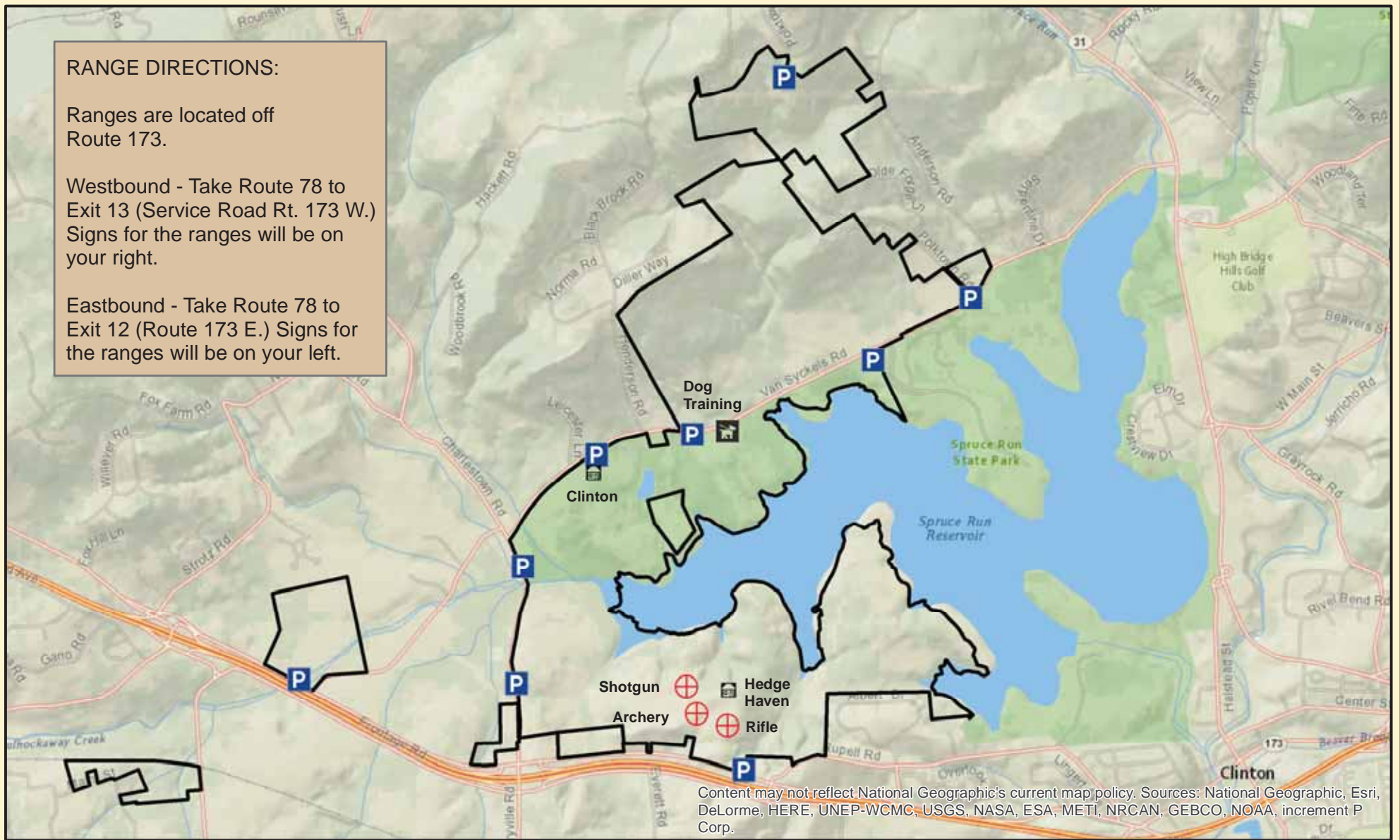


**RANGE DIRECTIONS:**

Ranges are located off Route 173.

Westbound - Take Route 78 to Exit 13 (Service Road Rt. 173 W.) Signs for the ranges will be on your right.

Eastbound - Take Route 78 to Exit 12 (Route 173 E.) Signs for the ranges will be on your left.





Content may not reflect National Geographic's current map policy. Sources: National Geographic, Esri, DeLorme, HERE, UNEP-WCMC, USGS, NASA, ESA, METI, NRCAN, GEBCO, NOAA, increment P Corp.

- Dog Training Area
- Office
- Parking
- Ranges
- WMA Boundary

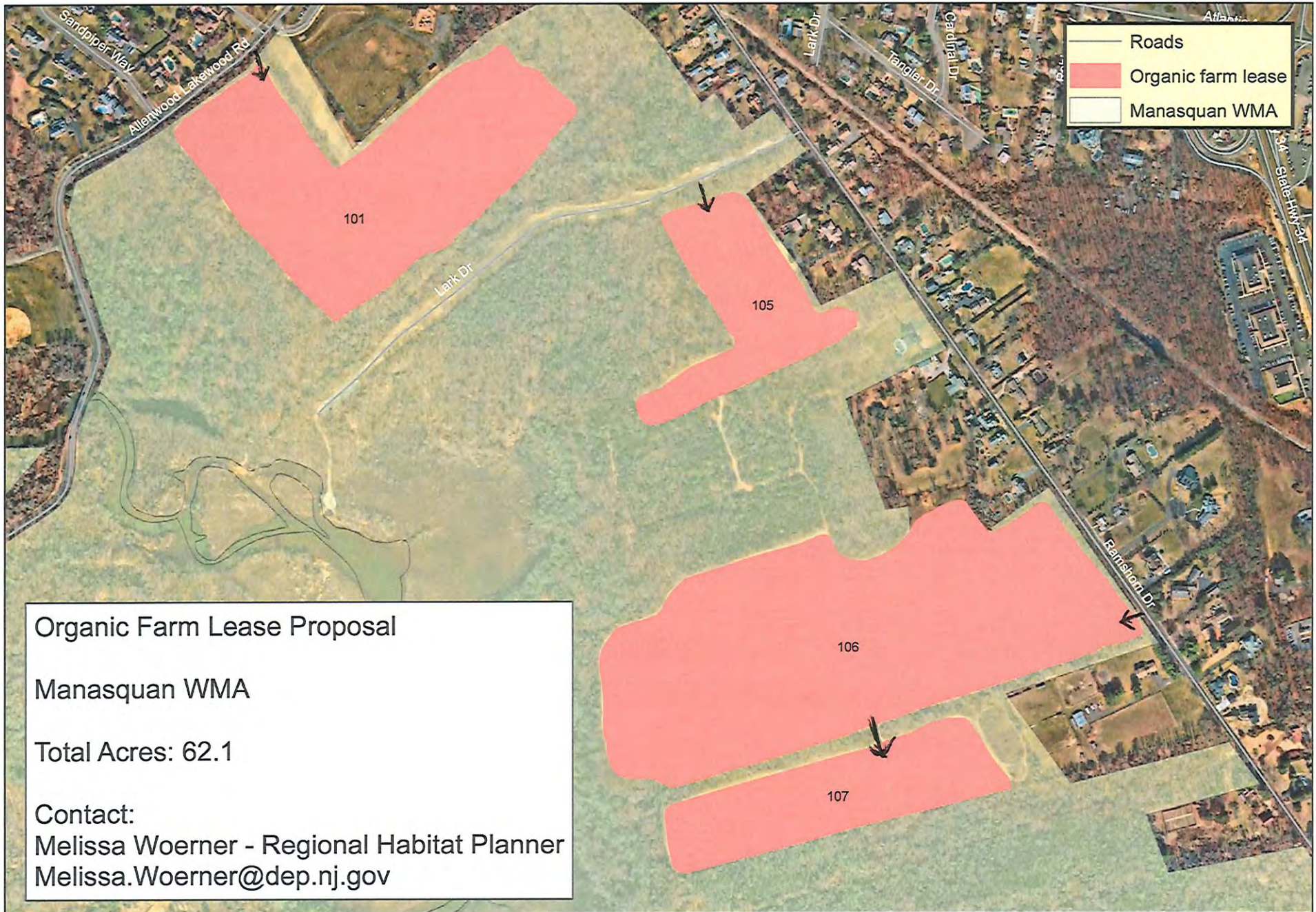
**Clinton Wildlife Management Area  
Bethlehem & Union Township,  
Hunterdon County  
2,064.17 Acres**

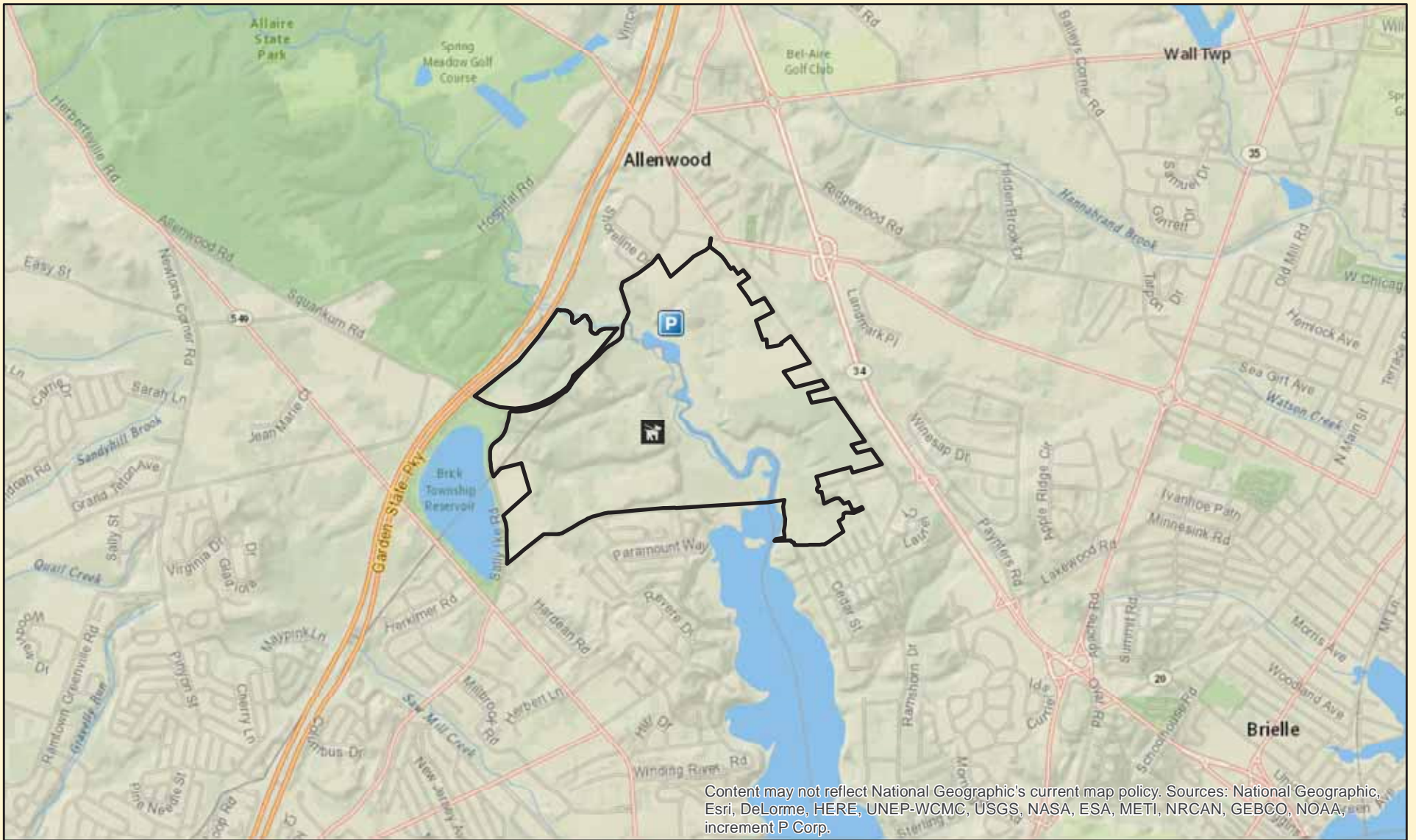
0 0.3 0.6 1.2 Miles

Department of Environmental Protection  
New Jersey Division of Fish and Wildlife

# Manasquan WMA





Content may not reflect National Geographic's current map policy. Sources: National Geographic, Esri, DeLorme, HERE, UNEP-WCMC, USGS, NASA, ESA, METI, NRCAN, GEBCO, NOAA, increment P Corp.



WMA Boundary

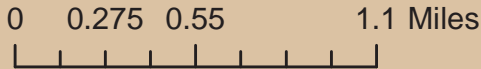


Parking



Dog Training

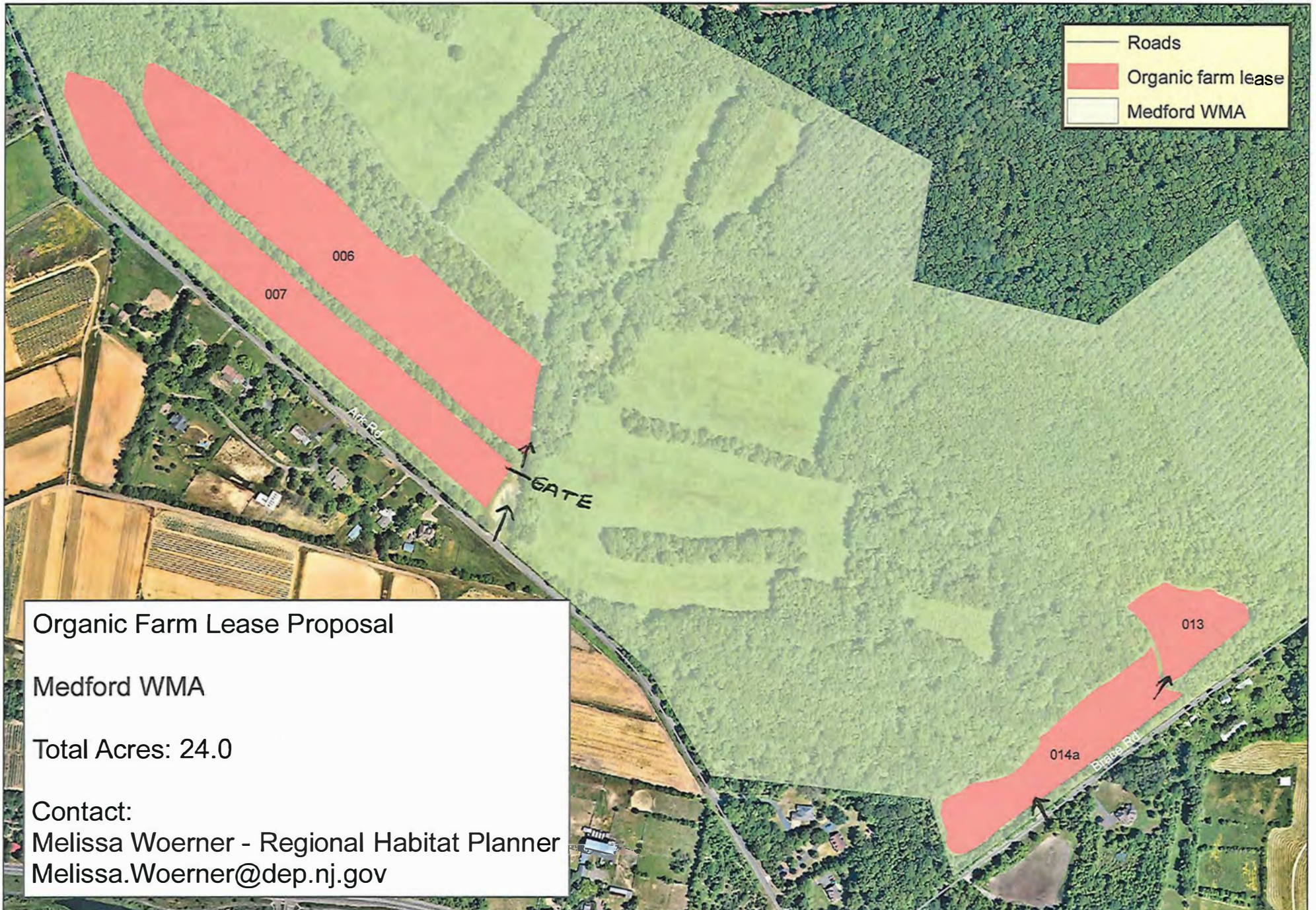
**Manasquan River Wildlife Management Area**  
**Ocean & Monmouth Counties**  
**Wall & Brick Townships**  
**744.33 Acres**



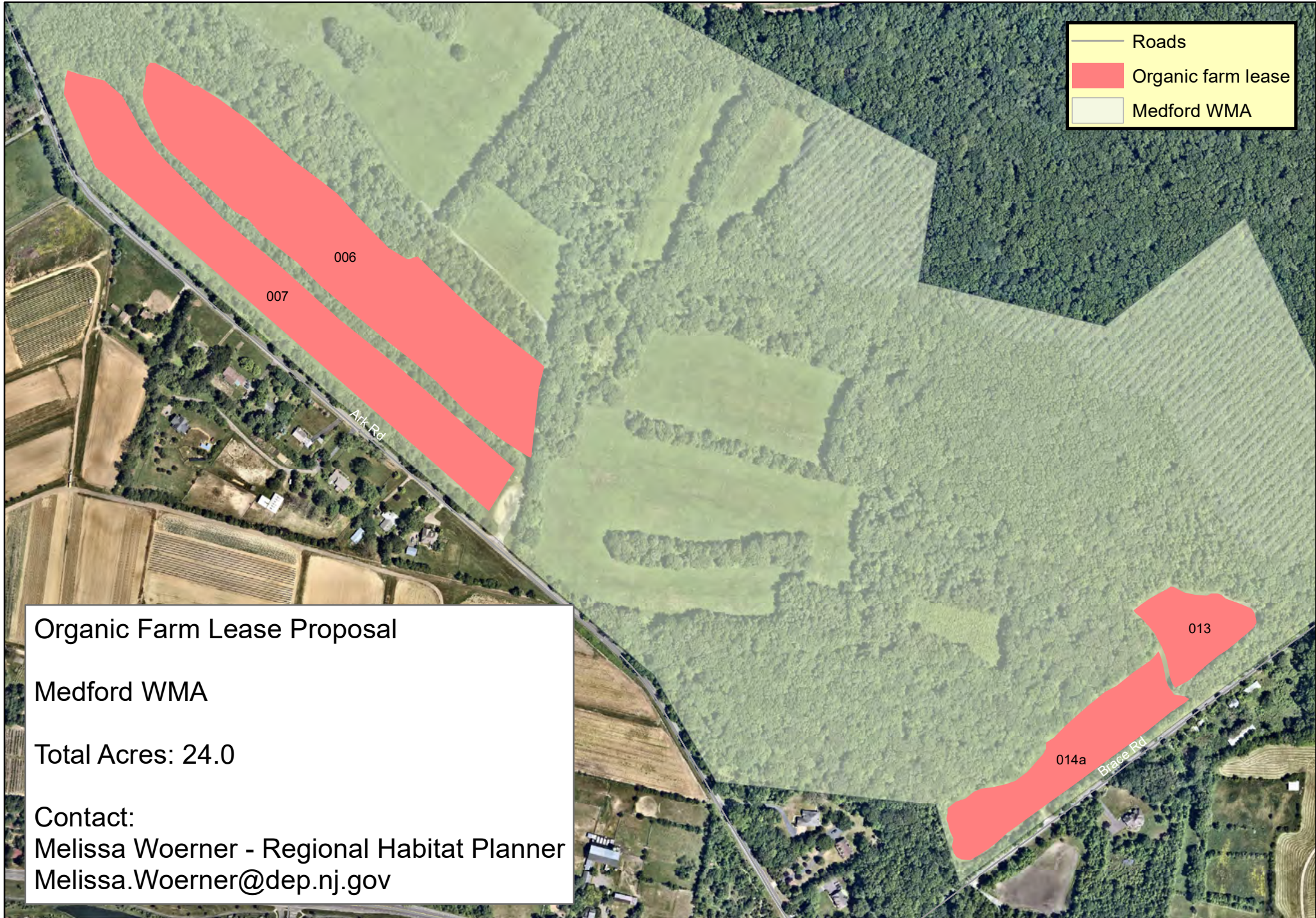
Department of Environmental  
 Protection  
 New Jersey Division of  
 Fish and Wildlife

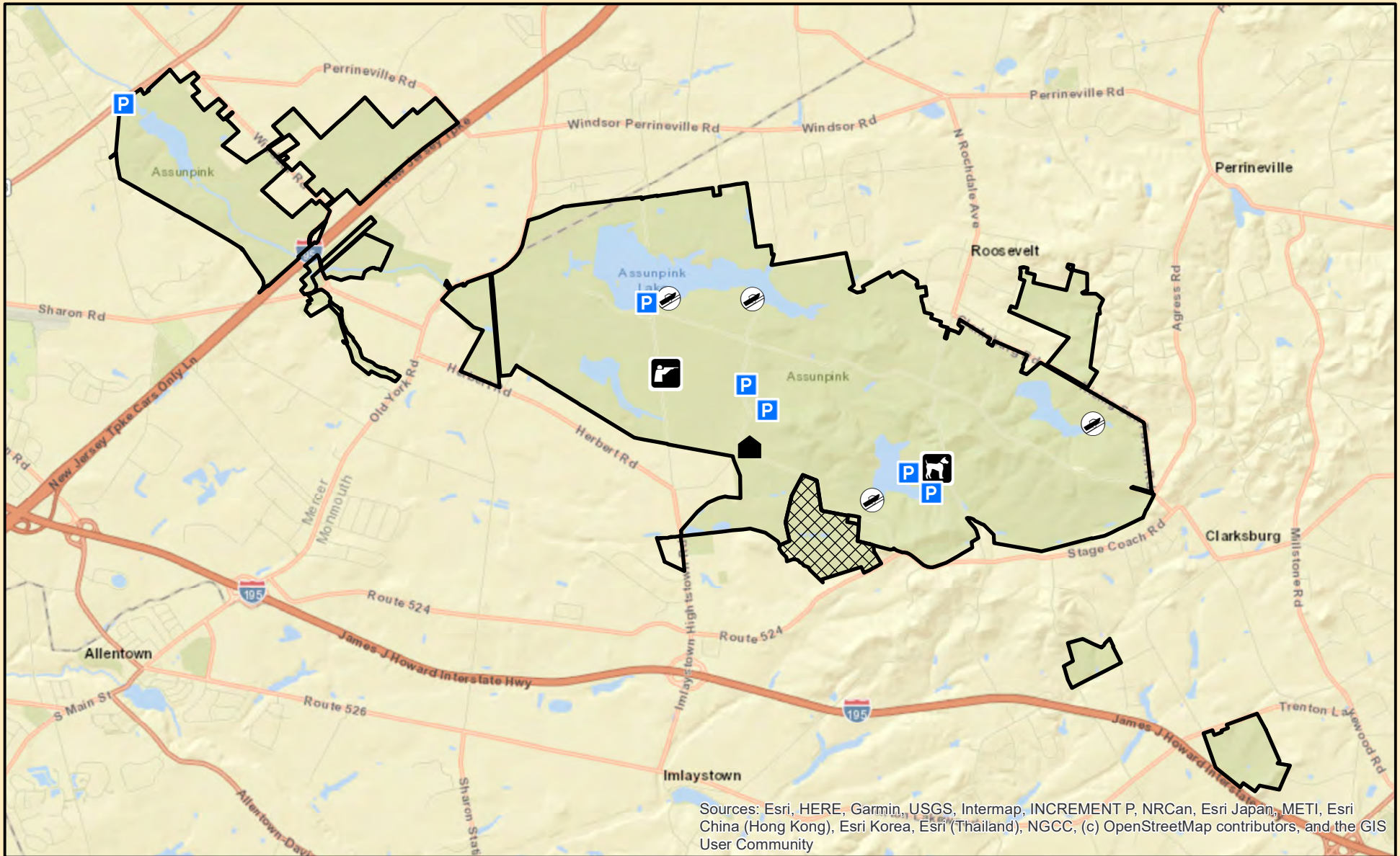


# Medford WMA










# Medford WMA

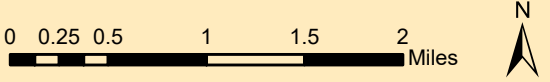




Sources: Esri, HERE, Garmin, USGS, Intermap, INCREMENT P, NRCan, Esri Japan, METI, Esri China (Hong Kong), Esri Korea, Esri (Thailand), NGCC, (c) OpenStreetMap contributors, and the GIS User Community

**Assunpink Wildlife Management Area**  
 Mercer & Monmouth Counties  
 Millstone, Roosevelt, Upper Freehold  
 & Washington Townships  
 6393 Acres

-  WMA Boundary
-  Horse Park of NJ
-  Office
-  Parking
-  Boat Ramp
-  Dog Training Area
-  Range (Shotgun)



NJ Department of  
 Environmental Protection  
 NJ Division of Fish & Wildlife



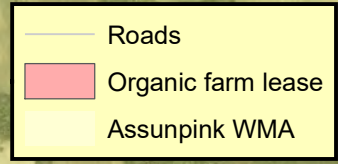
# Assunpink WMA

Organic Farm Lease Proposal

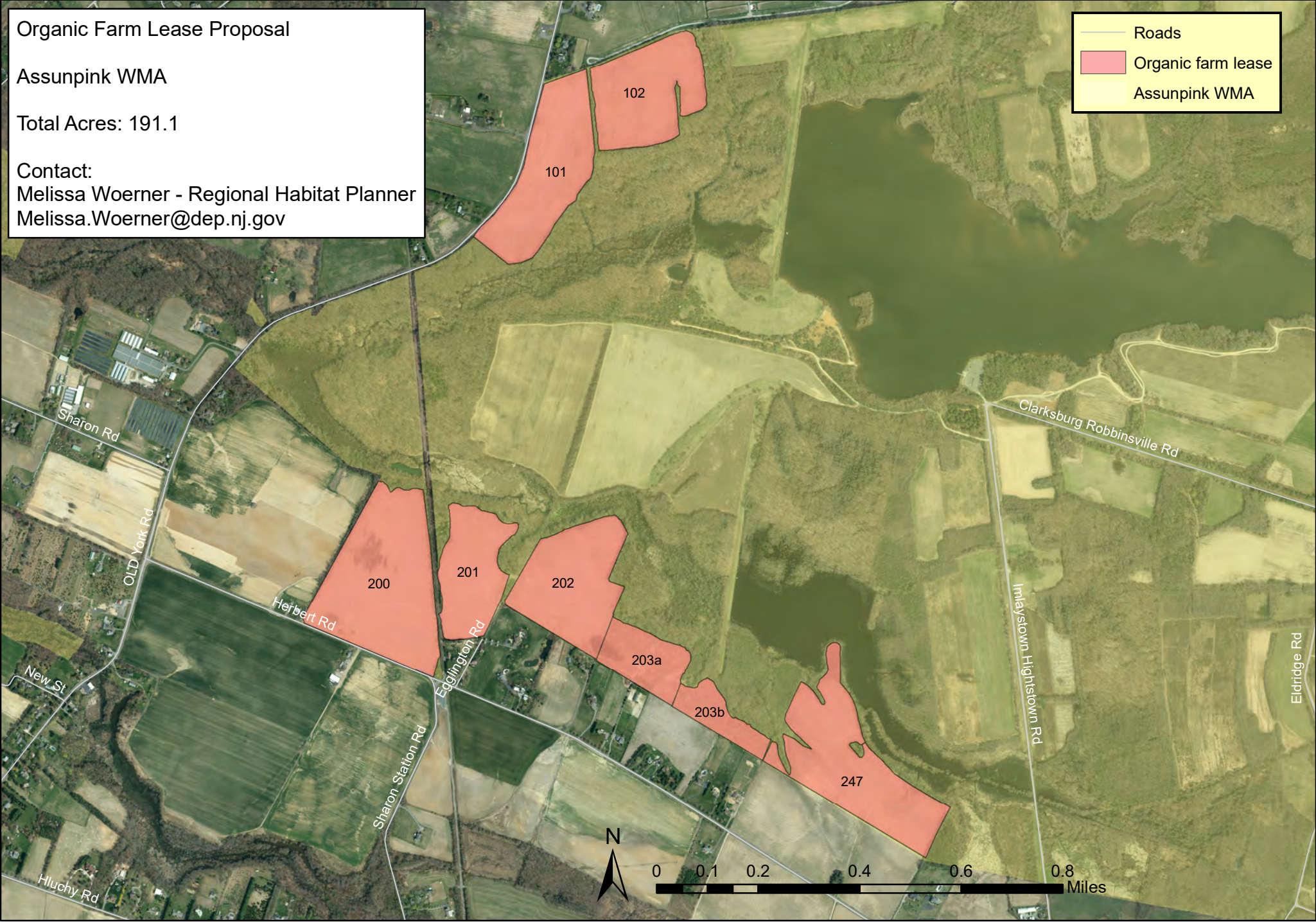
Assunpink WMA

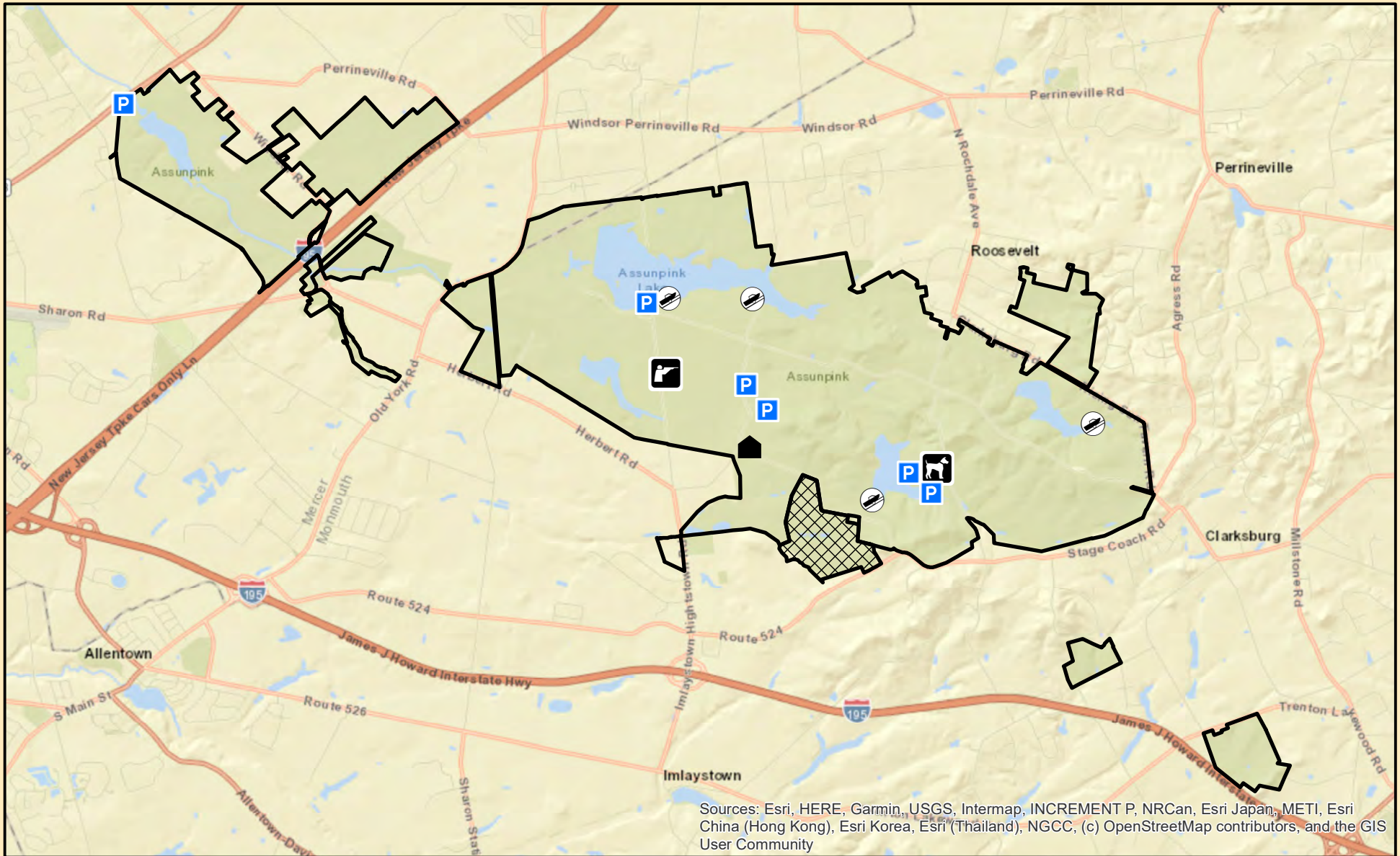
Total Acres: 191.1

Contact:  
Melissa Woerner - Regional Habitat Planner  
Melissa.Woerner@dep.nj.gov










- Roads
- Organic farm lease
- Assunpink WMA

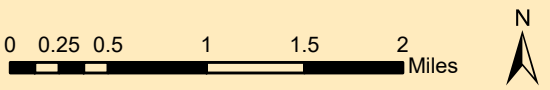




Sources: Esri, HERE, Garmin, USGS, Intermap, INCREMENT P, NRCan, Esri Japan, METI, Esri China (Hong Kong), Esri Korea, Esri (Thailand), NGCC, (c) OpenStreetMap contributors, and the GIS User Community

**Assunpink Wildlife Management Area**  
 Mercer & Monmouth Counties  
 Millstone, Roosevelt, Upper Freehold  
 & Washington Townships  
 6393 Acres

-  WMA Boundary
-  Horse Park of NJ
-  Office
-  Parking
-  Boat Ramp
-  Dog Training Area
-  Range (Shotgun)



NJ Department of  
 Environmental Protection  
 NJ Division of Fish & Wildlife



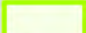
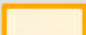
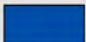



**DISCLAIMER: This map does NOT include designated safety zones.  
It is the responsibility of all hunters to confirm safety zones on the ground.**

# Medford

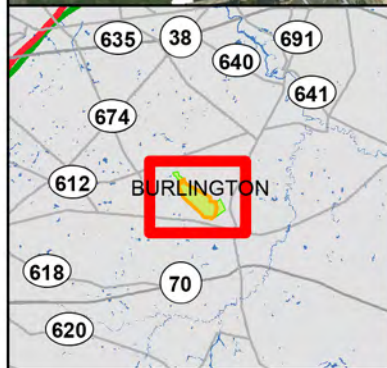
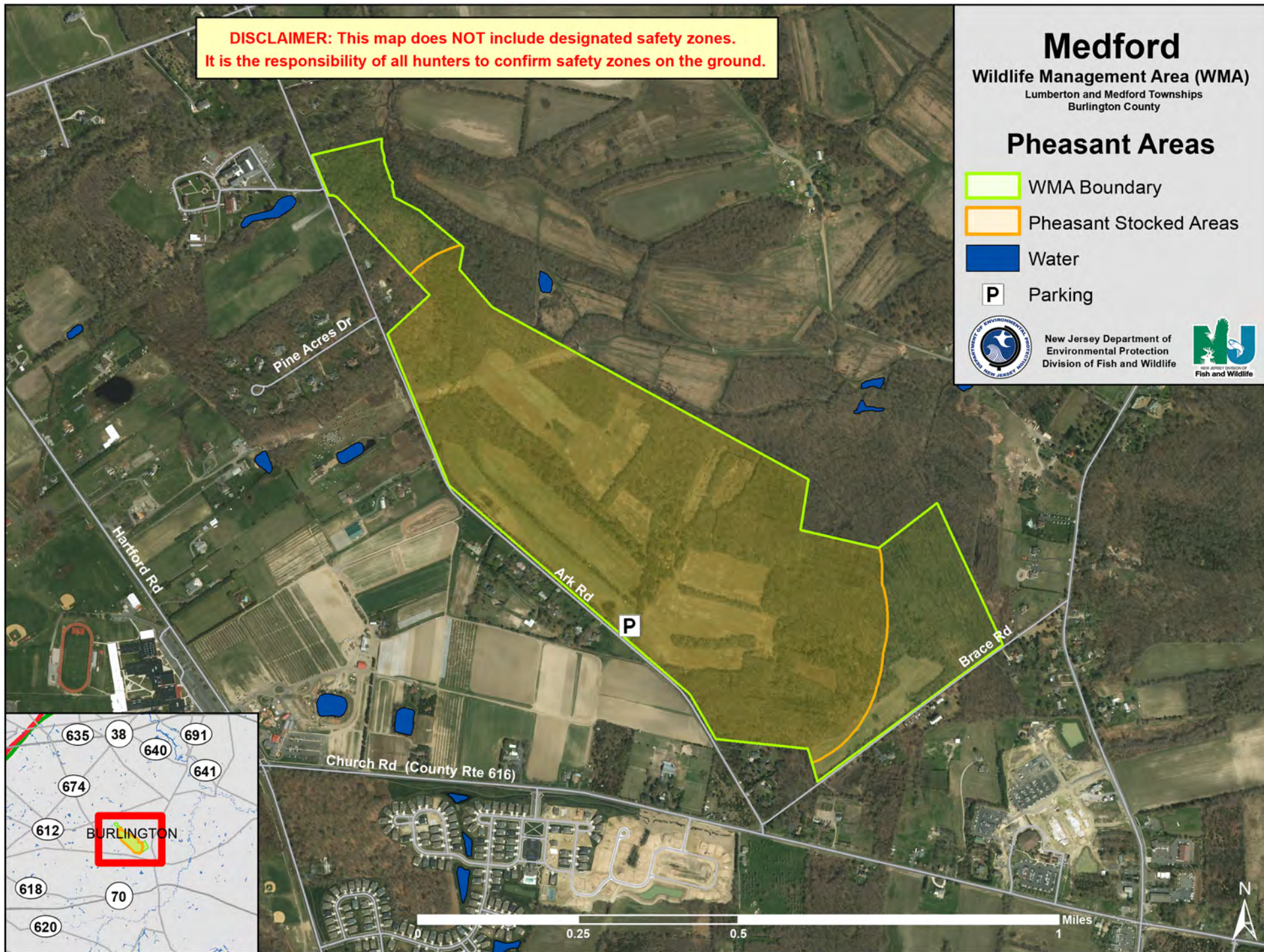
Wildlife Management Area (WMA)  
Lumberton and Medford Townships  
Burlington County

## Pheasant Areas

-  WMA Boundary
-  Pheasant Stocked Areas
-  Water
-  Parking



New Jersey Department of  
Environmental Protection  
Division of Fish and Wildlife



Organic Farm Lease Proposal

ABM03 - Abbotts Meadow Wildlife Management Area



Total Acres: 17.4

Contact:

Tyler Kinney - Regional Habitat Planner

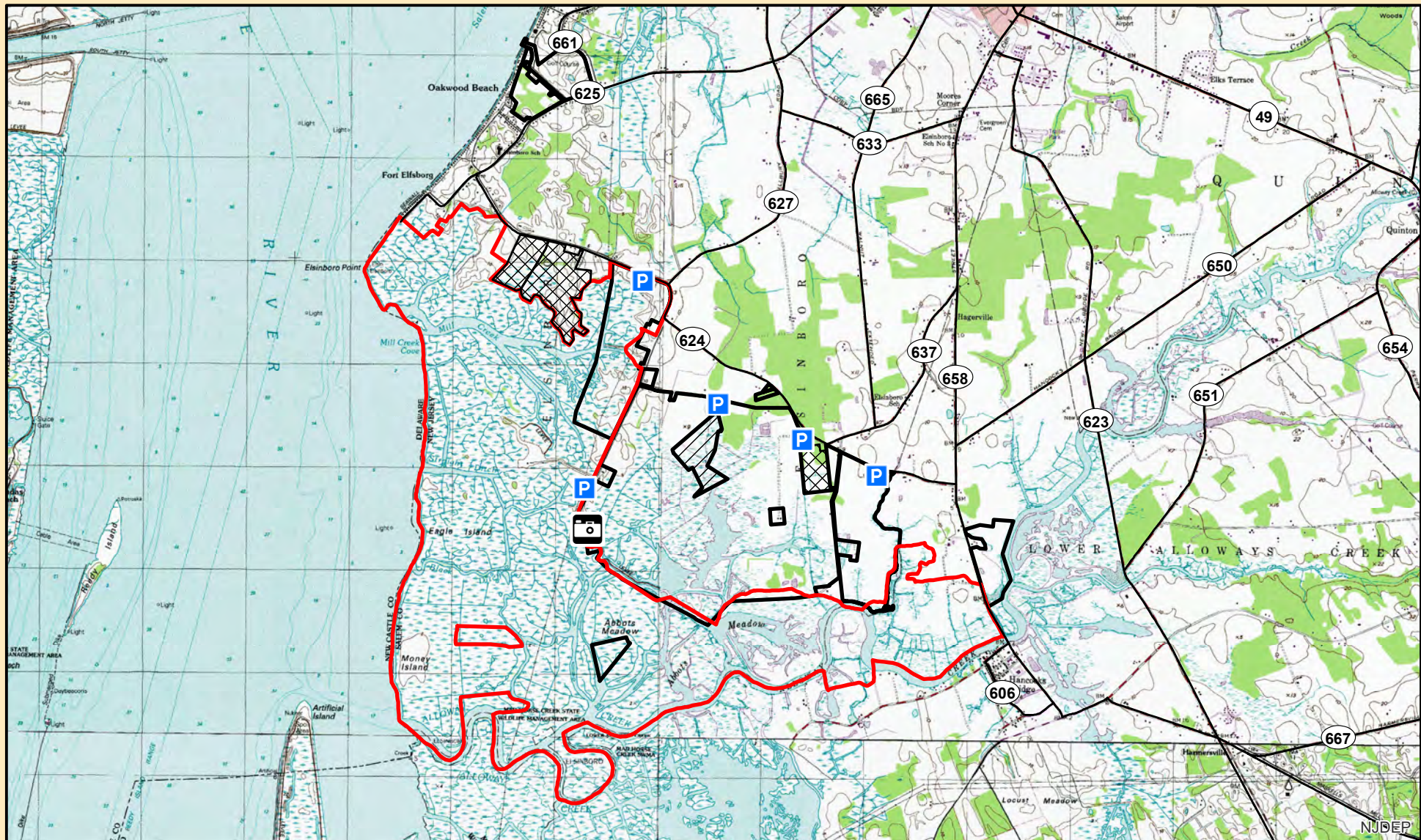
Tyler.Kinney@dep.nj.gov

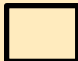
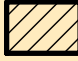




Legend

-  Division of Fish and Wildlife
-  Lease Area

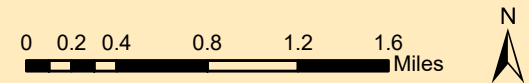


75°27'48"W 39°31'N



-  WMA Boundary
-  Exception
-  Conservation Easement
-  PSE&G 1-888-MARSHES
-  Viewing Platform
-  Parking

**Abbots Meadow Wildlife Management Area**  
 Salem County - Elsinboro Township  
 1,618 Acres



NJ Department of  
 Environmental Protection  
 NJ DEP Fish & Wildlife



NJDEP

Organic Farm Lease Proposal

GUM02 - Gumtree Corner Wildlife Management Area



Total Acres: 24

Contact:

Tyler Kinney - Regional Habitat Planner

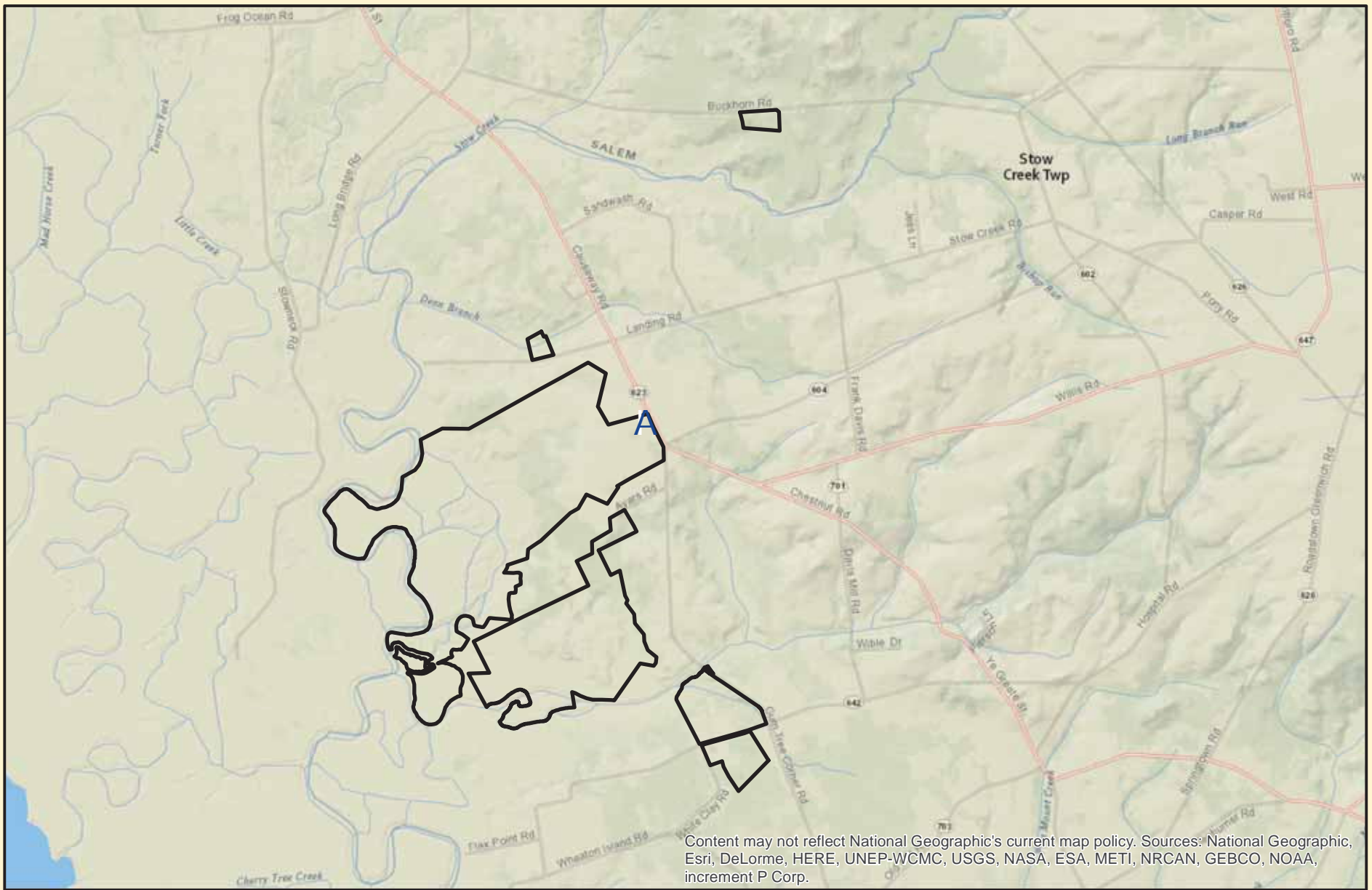
Tyler.Kinney@dep.nj.gov

Legend

-  Division of Fish and Wildlife
-  Lease Area




75°22'47\"



Content may not reflect National Geographic's current map policy. Sources: National Geographic, Esri, DeLorme, HERE, UNEP-WCMC, USGS, NASA, ESA, METI, NRCAN, GEBCO, NOAA, increment P Corp.



**A** Parking

 WMA Boundary

**Gum Tree Corner Wildlife Management Area**  
**Cumberland County - Stow Creek Township**  
**1,230.79 Acres**

0 0.4 0.8 1.6 Miles

Department of Environmental Protection  
 New Jersey Division of Fish and Wildlife

Organic Farm Lease Proposal

NSW01 - New Sweden Wildlife Management Area



Total Acres: 50.8

Contact:

Tyler Kinney - Regional Habitat Planner

Tyler.Kinney@dep.nj.gov

Legend

-  Division of Fish and Wildlife
-  Lease Area



**Organic Farm Lease Proposal**

MNT01 - Mantua Creek Wildlife Management Area


Total Acres: 13.7

**Contact:**


Tyler Kinney - Regional Habitat Planner

Tyler.Kinney@dep.nj.gov

**Legend**

 Division of Fish and Wildlife

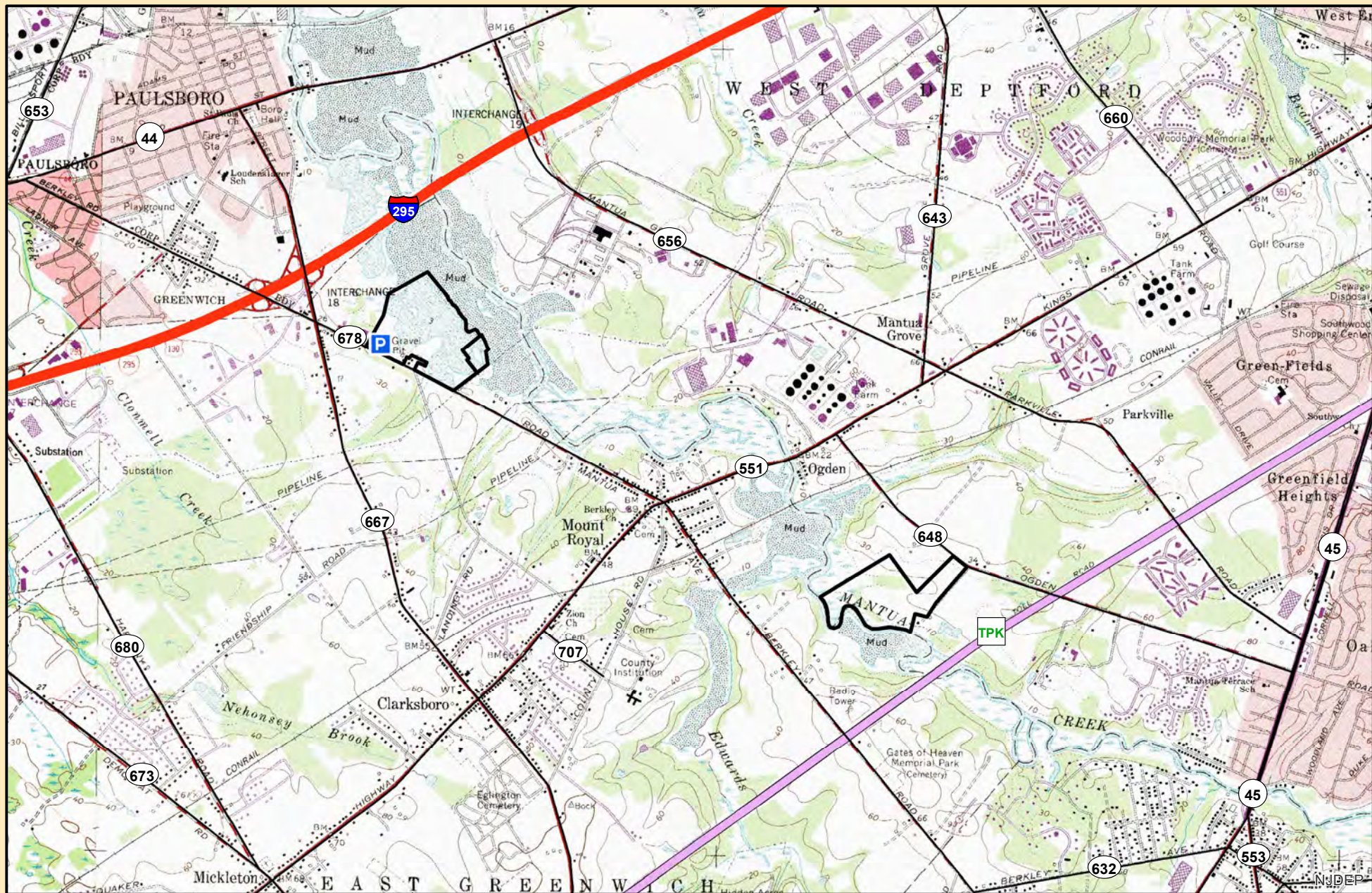
**LE21 Farm Lease**



 Lease Area



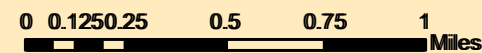
0 0.04 0.07 0.14 0.21 0.28 Miles

75°11'41"W 39°48'21"N



-  WMA Boundary
-  Parking

Mantua Creek Wildlife Management Area  
 Gloucester County - East Greenwich  
 & West Deptford Townships  
 107 Acres



NJ Department of  
 Environmental Protection  
 NJ Division of Fish & Wildlife





Organic Farm Lease Proposal

THU02 - Thundergut Pond Wildlife Management Area


Total Acres: 59.4

Contact:


Tyler Kinney - Regional Habitat Planner

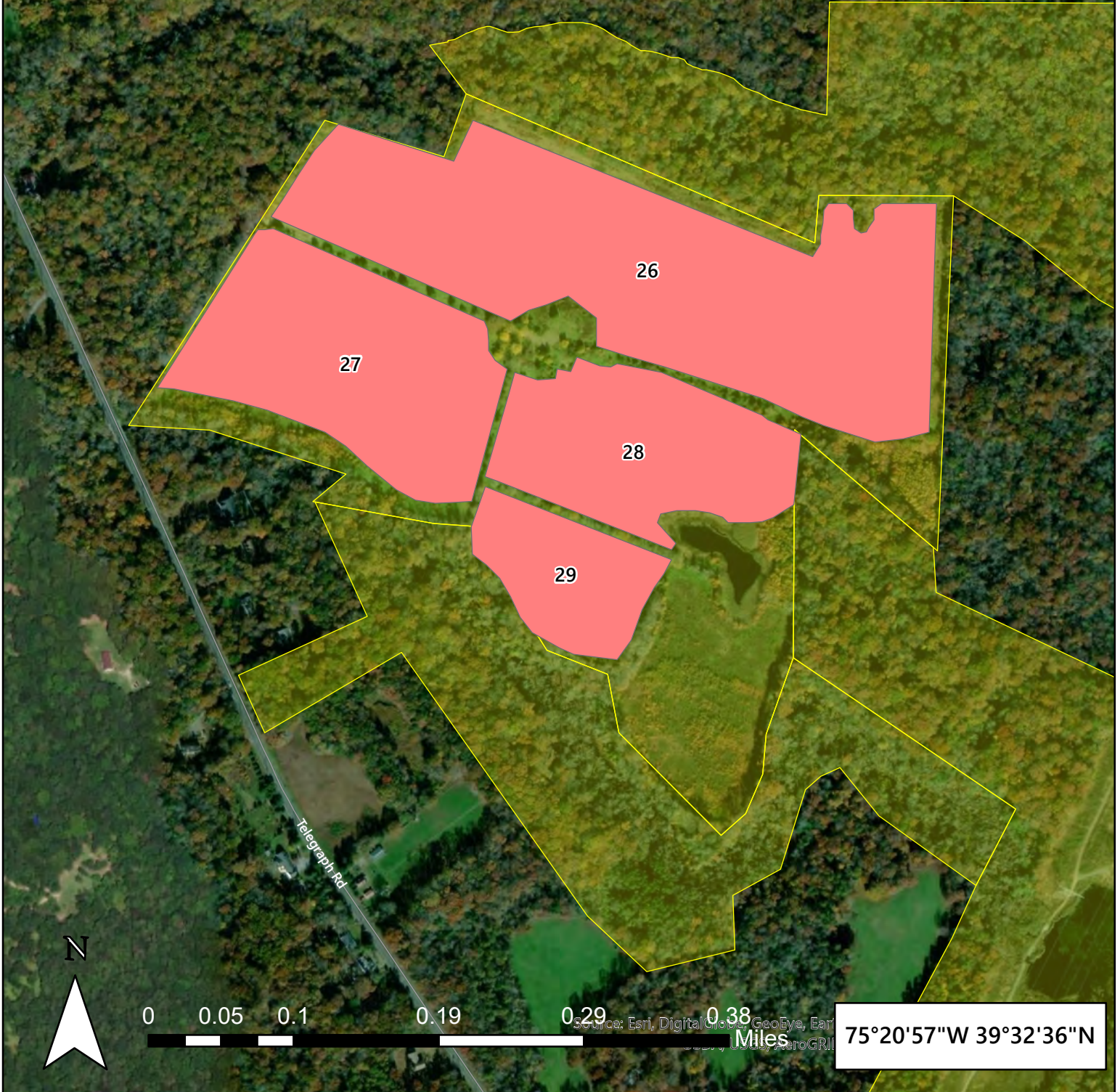
Tyler.Kinney@dep.nj.gov

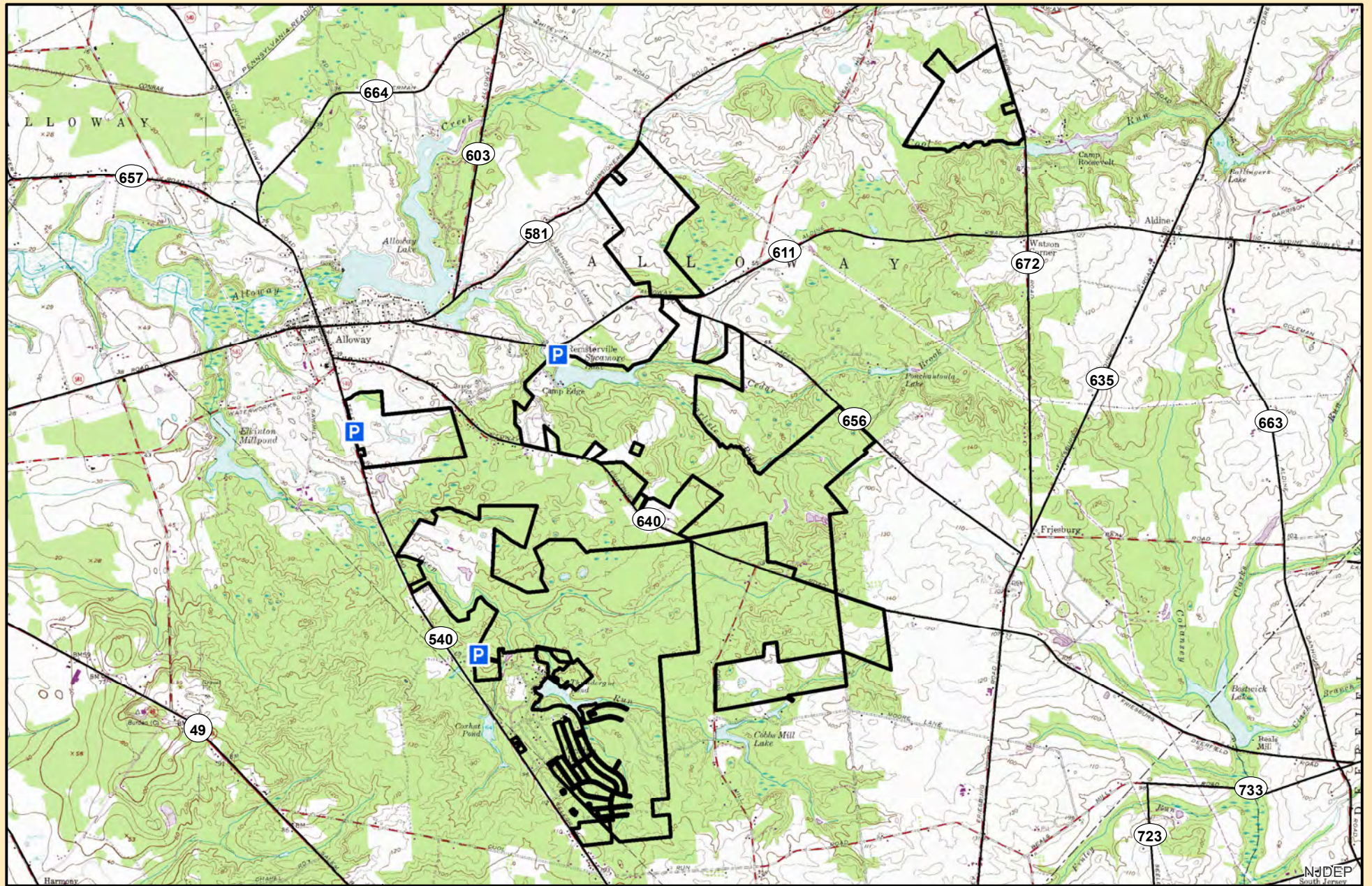
Legend

 Division of Fish and Wildlife

LE21 Farm Lease

 Lease Area





 WMA Boundary

 Parking

Access to Sycamore Lake prohibited  
Jan 1st through July 31st for protection  
of Endangered Species

Thundergut Pond Wildlife Management Area  
Salem County - Alloway Township  
2511 Acres

0 0.175 0.35 0.7 1.05 1.4  
Miles



NJ Department of  
Environmental Protection  
NJ Division of Fish & Wildlife



Organic Farm Lease Proposal

UNI01 - Union Lake Wildlife Management Area



Total Acres: 40

Contact:

Tyler Kinney - Regional Habitat Planner

Tyler.Kinney@dep.nj.gov

Legend

-  Division of Fish and Wildlife
-  Lease Area

1

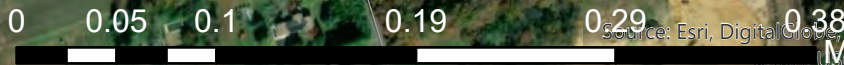
2

2a

Vineland Ave

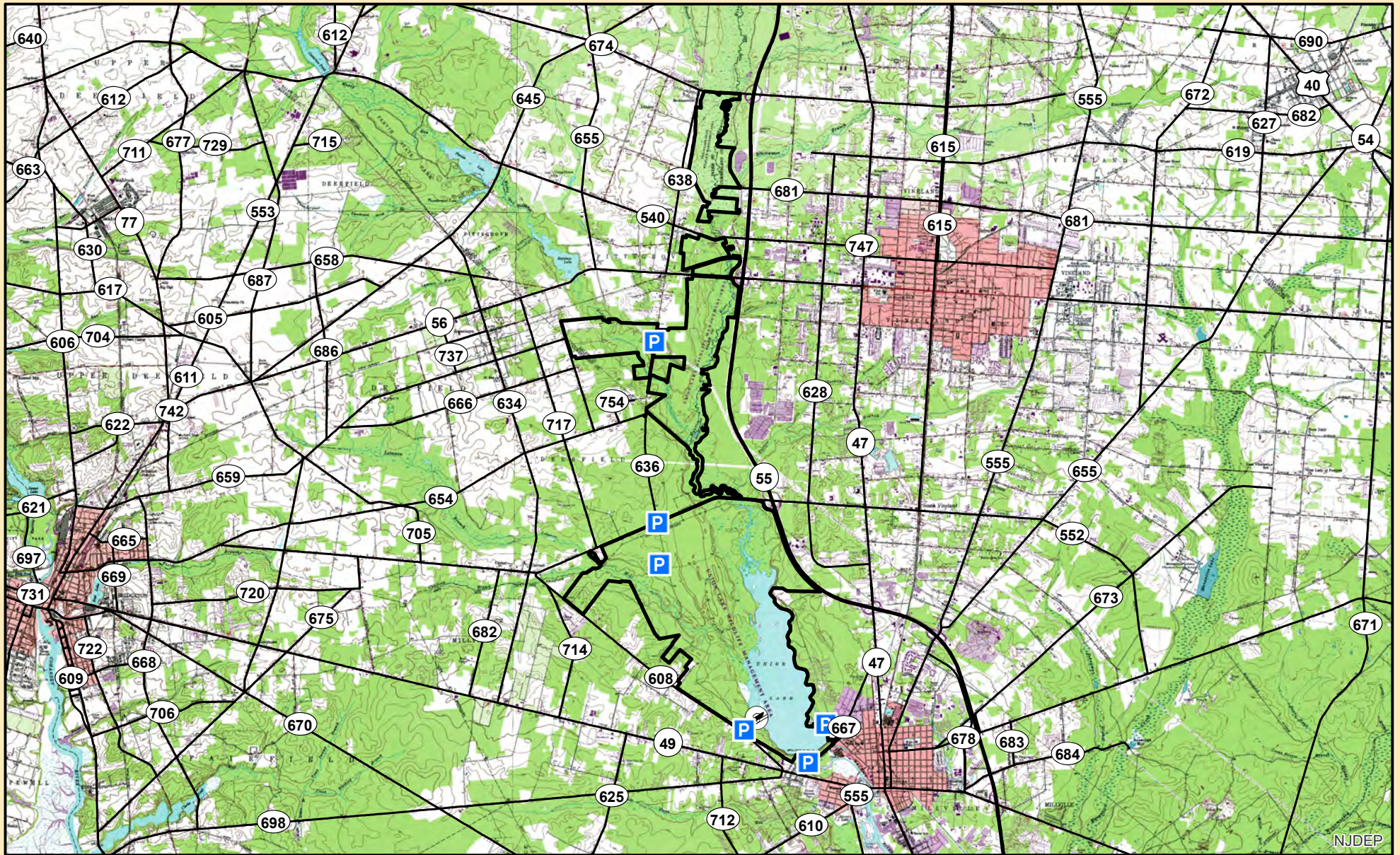
Vineland Ave

Bridgeton Ave



Source: Esri, DigitalGlobe, GeoEye, Earthstar, United States, AeroGRID


75°6'32"W 39°28'41"N



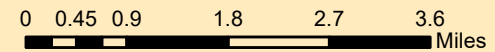
NJDEP

 WMA Boundary

 Parking

 Boat Ramp

Union Lake Wildlife Management Area  
 Cumberland County - Vineland City;  
 Salem County - Pittsgrove Township  
 5,269 Acres



NJ Department of  
 Environmental Protection  
 NJ Division of Fish & Wildlife



Organic Farm Lease Proposal

FOR01 - Fortescue Wildlife Management Area


Total Acres: 21.5

Contact:

Tyler Kinney - Regional Habitat Planner

Tyler.Kinney@dep.nj.gov

Legend

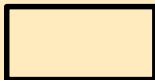
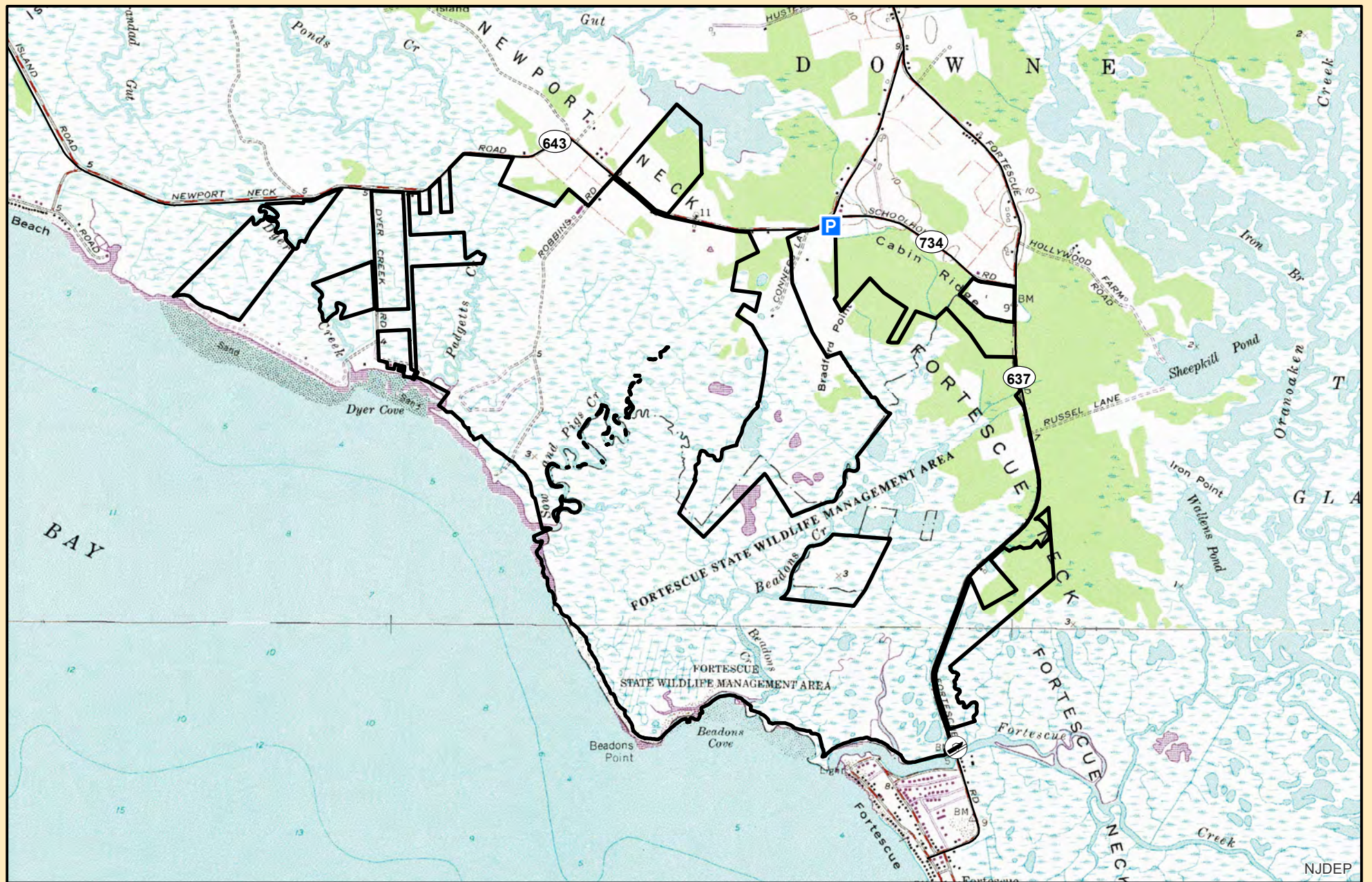
 Lease Area



N

0 0.02 0.04 0.08 0.12 0.16 Miles

75°11'28"W 39°16'26"N

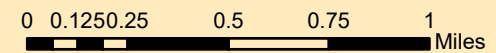


WMA Boundary



Parking

Fortescue Wildlife Management Area  
 Cumberland County - Downe Township  
 1,951 Acres



NJ Department of  
 Environmental Protection  
 NJ Division of Fish & Wildlife



NJDEP

Organic Farm Lease Proposal

SAL07 - Salem River Wildlife Management Area


Total Acres: 19.5

Contact:


Tyler Kinney - Regional Habitat Planner

Tyler.Kinney@dep.nj.gov

Legend

 Division of Fish and Wildlife

LE21 Farm Lease

 Lease Area

Sunset Dr

Seabrook Rd

Pointers Auburn Rd

87

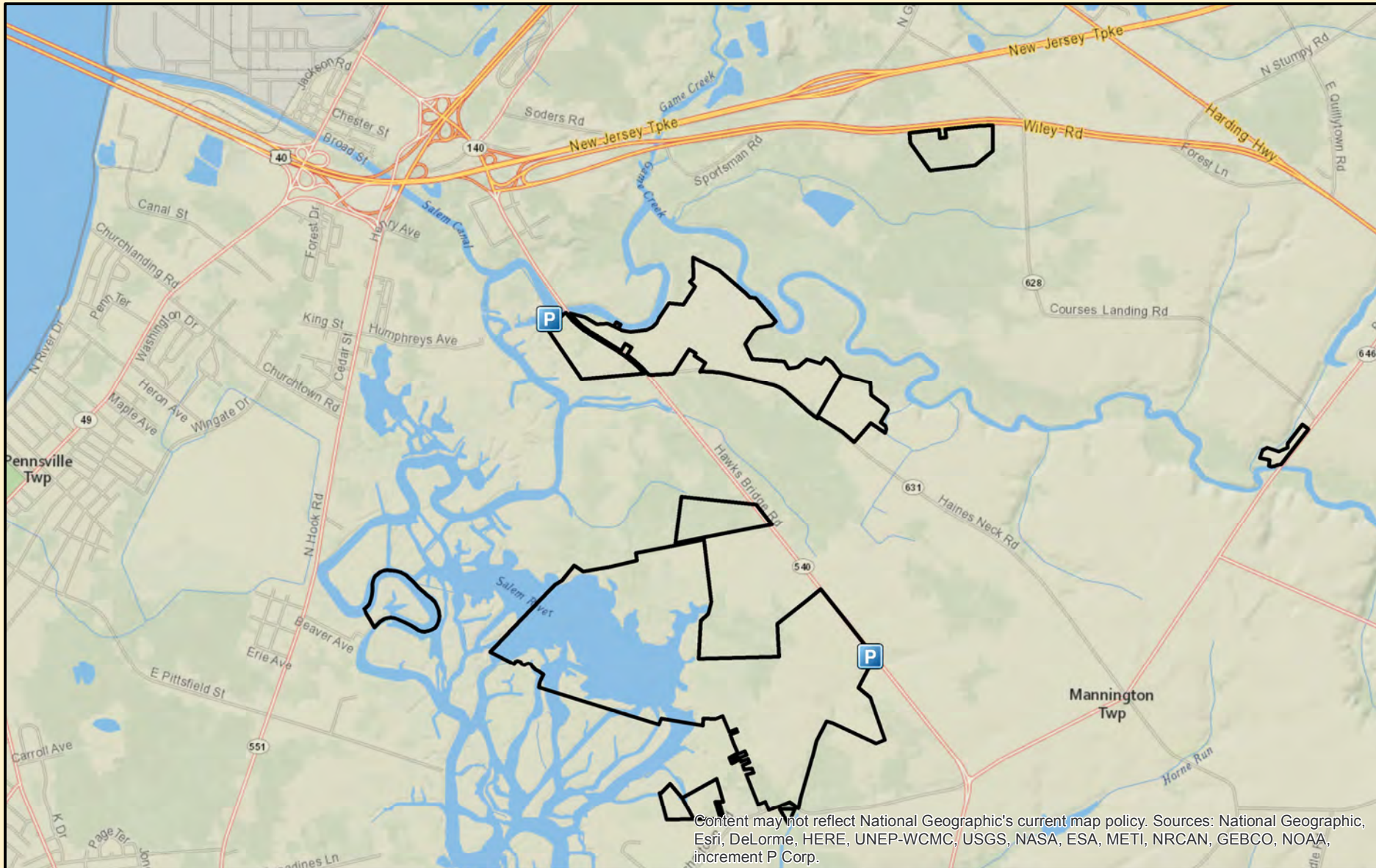
N




0 0.02 0.04 0.09 0.14 0.18

Miles

Source: Esri, DigitalGlobe, GeoEye, Earthstar, CNES, Airphoto, GeoEye, AeroGRID

75°26'34"W 39°37'16"N



-  Observation Tower
-  Parking
-  Salem River

**Salem River Wildlife Management Area**  
**Salem County - Carneys Point, Mannington**  
**& Pilesgrove Townships**  
**3,342.94 Acres**

0      0.375      0.75      1.5 Miles

Department of Environmental  
 Protection  
 New Jersey Division of  
 Fish and Wildlife

