



# New Jersey Audubon's Healthy Land and Waters Grant Fact Sheet

## Overview

The Healthy Land and Waters Grant (HLWG) provides financial assistance to agricultural producers and large landowners to engage in conservation practices that improve soil and watershed health while enhancing habitat for New Jersey's wildlife.

Grants will be awarded for applications that protect local watersheds through the implementation of conservation practices on agricultural and forested land. Land within designated priority areas that improve soil structure, reduce sediment and nutrient runoff, prevent contamination of local waterways, and enhance wildlife habitat will be eligible and competitive for cost-share assistance, while others will receive technical assistance and further consult.

Geographic priority areas are determined through partnerships within the Delaware River Watershed Initiative (DRWI) and include key areas within Cape May, Salem and Cumberland County. Portions of the following watersheds will be considered for financial assistance; Upper Muddy Run, Lower Salem River, Upper Salem River, Cohansey River, and Cape May Peninsula. Maps outlining these focal areas can be found at the end of this fact sheet.

New Jersey Audubon's Healthy Land and Waters Grant (HLWG) is made possible by private funding from the William Penn Foundation, National Fish and Wildlife Foundation, and the State of New Jersey Department of Environmental Protection and through partnership with the USDA's Natural Resources Conservation Service.

## Eligible Practices

- Cover crops
- Residue Tillage Management – No Till
- Residue Tillage Management- Reduced Till
- Riparian herbaceous or forested buffers
- Filter strips
- Livestock exclusion fence and stream crossing
- Grassed waterway
- Roofs and covers to divert clean water
- Wildlife habitat enhancement practices
- Conservation cover and pollinator habitat
- Critical area planting
- Tree/Shrub Establishment and Brush Management
- Structures for wildlife funding process
- Implementation for forestry practices

- Many more!

## Funding Process

Applications are reviewed on a batched, first come, first served basis. NJA staff perform site visits to determine eligibility and practice interest. Applications are ranked based off internal criteria such as geographic location and inclusion of wildlife practices. Funds for tillage and cover crop implementation may go towards equipment costs, but depend upon a per acre payment rate, and will be capped at 60% equipment cost. Contracts are one-year contracts, but producers are liable to maintain practice for NRCS' determined practice lifespan which varies per practice up to 10 years. Maintenance payments are available for such practices as well as technical assistance for maintenance and upkeep.

## Who's Eligible to Apply?

All farmers and landowners within the focal areas are encouraged to apply. There is no acreage minimum to participate, you may apply whether you own 5 or 500 acres. Lessees are also welcomed to apply. Applications are also accepted whether you run a conventional, organic, urban, or regenerative etc. operation!

## How to Apply

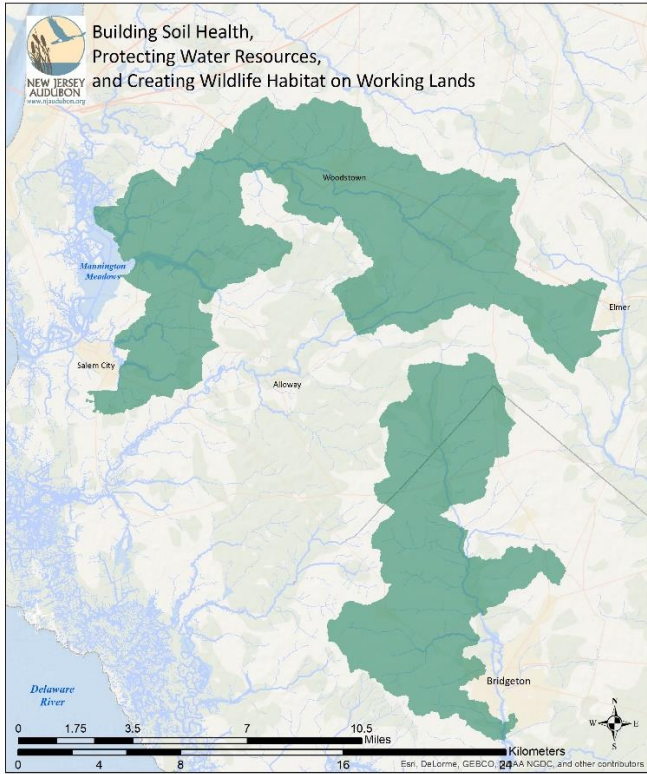
You can print an application from our website at <https://njudubon.org/stewardship-publication-resources/> or pick up at your local USDA Service center. Cape May, Atlantic, and Cumberland counties visit:

- Vineland Service Center  
1318 South Main Street, Vineland, NJ 08360  
Salem and Gloucester Counties visit:
- 51 Cheney Road, Woodstown, NJ 08098

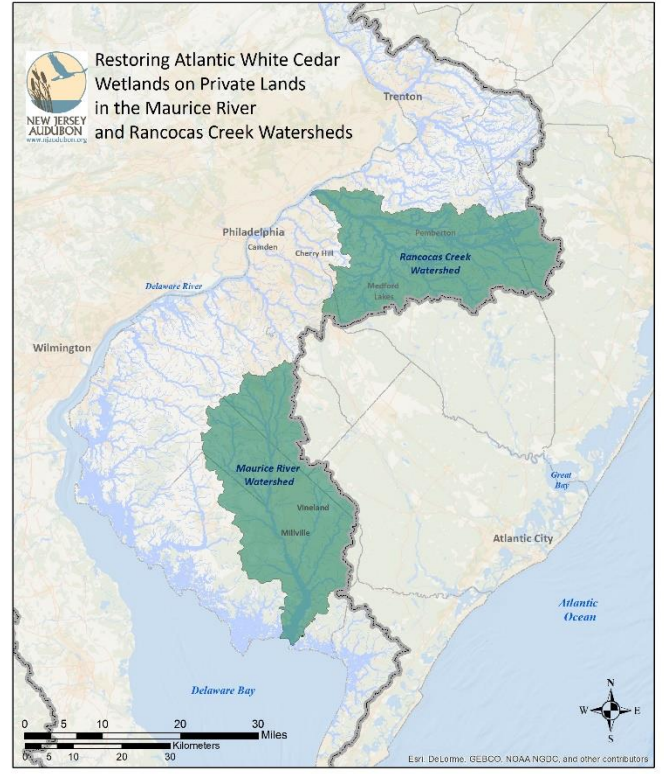
## For more information, please contact:

- Brittany Dobrzynski Welch
  - Stewardship Project Coordinator
  - [brittany.dobrzynski@njudubon.org](mailto:brittany.dobrzynski@njudubon.org)
  - 609-400-3826
- Alyssa Bright
  - Agriculture Stewardship Technician
  - [alyssa.bright@njudubon.org](mailto:alyssa.bright@njudubon.org)
  - 609-400-3857

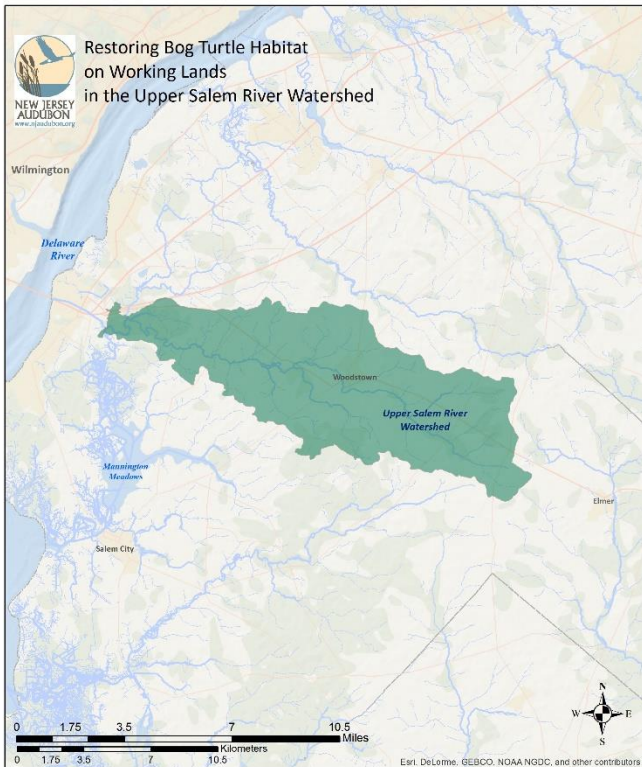
### HLWG Agriculture Focus Areas



### HLWG Atlantic White Cedar Focus Area



### HLWG Bog Turtle Restoration Focus Area



### HLWG Cape May County Focus Area

